

3. PARTICIPATION

3.1 BIENNIAL CERVICAL SCREENING RATES (January 1997 - December 1998)

3.1.1 Biennial cervical screening rates by 5-year age groups

Biennial cervical screening data for the reporting period 1 January 1997 to 31 December 1998 is presented here. Estimates of biennial cervical screening rates from shorter reporting periods are still required to assess recent screening activity. Adjusted two-yearly screening rates for the reporting period in NSW were approximately 61.9% for the 20 - 69 year age group, and 57.3% for the 50 - 69 year age group. These screening rates comprise the recorded screening rates for 20-69 year (59.5%) and 50-69 year (54.9%) (Table 3.1), the “opt-off” rate in NSW (1.6%), non-transfer of data from inter-state laboratories (0.2%), and screens of women of unknown age (0.6%). In total, recorded screening rates for the state were under-enumerated by approximately 2.4 percentage points. Where the term “screening rates” is used in this report, unqualified as to whether adjusted or recorded, it refers to the recorded screening rates.

Cervical screening rates by 5-year age group (see Table 3.1 & Fig 1) show the 20 - 49 year age group had a significantly higher screening rate (60.9%) than the 50 - 69 year age group (54.9%). The screening rate was highest in the 30 - 34 year age group (65.2%), and lowest in the 65 - 69 year age group (39.7%).

Table 3.1: Biennial cervical screening rates by age group in NSW women For the reporting period 1 January 1997 - 31 December 1998

Age group (years)	Women screened	Biennial screening rates (%)	
		Rates	95% CIs
20-24	106,923	48.0	47.8 - 48.2
25-29	151,942	63.0	62.8 - 63.2
30-34	154,442	65.2	65.0 - 65.3
35-39	153,887	63.8	63.6 - 64.0
40-44	130,186	62.2	62.0 - 62.5
45-49	109,262	62.7	62.5 - 62.9
50-54	85,762	62.7	62.5 - 63.0
55-59	56,201	60.9	60.6 - 61.2
60-64	41,862	49.6	49.3 - 49.9
65-69	30,946	39.7	39.4 - 40.1
20-49	806,642	60.9	60.8 - 60.9
50-69	214,771	54.9	54.7 - 55.0
20-69	1,021,413	59.5	59.4 - 59.6

**FIGURE 1:
Biennial screening rates by 5-year age groups in NSW**

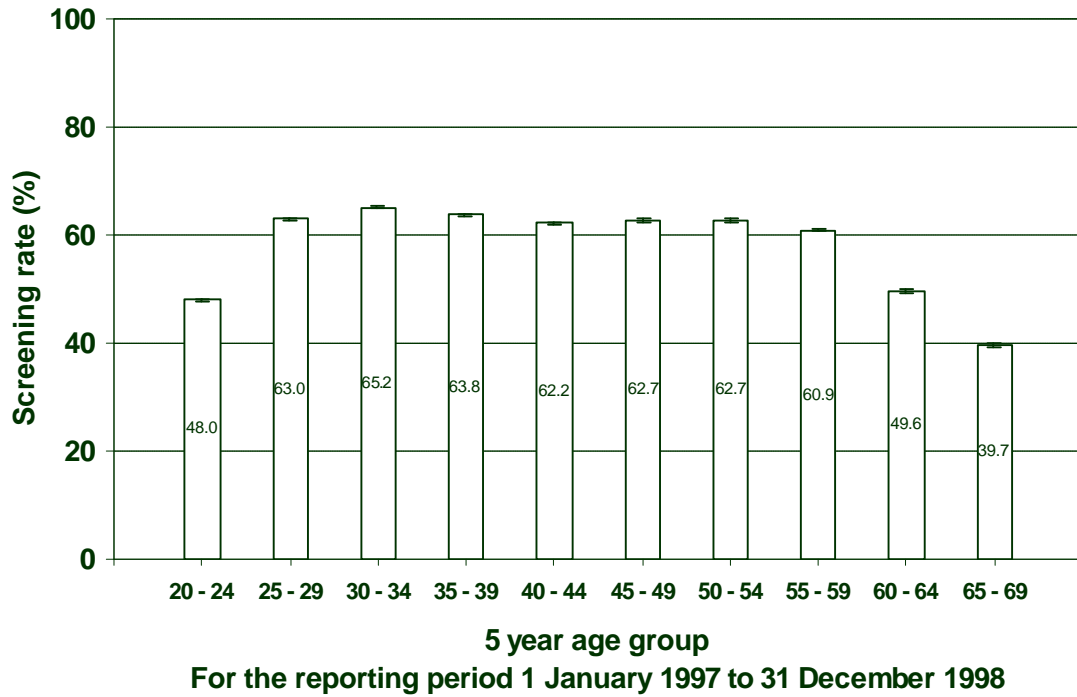


Figure 1 indicates that screening rates were higher across the 25 - 59 year age groups (> 60.9%), and lower in the 60 - 69 year age groups (< 49.6%).

3.1.2 Biennial cervical screening rates by NSW urban and rural areas

Within each Area Health Service, Local Government Areas (LGAs) have been assigned to one of six Area Classifications based on classification of population and remoteness developed by the Department of Primary Industries & Energy and the Department of Human Services and Health⁴. (For further description see Appendix 6, Table A3)

The recorded screening rate by urban and rural areas (see Table 3.2) shows that Large Rural Centres (65.6%) and Small Rural Centres (61.7%) had significantly higher screening rates compared to NSW (59.5%). Screening rates in the Other Metropolitan Centre (58.8%) did not differ significantly from NSW overall. Capital City (58.1%), Other Rural Areas (57.5%) and Other Remote Areas (52.5%) had significantly lower recorded screening rates than NSW.

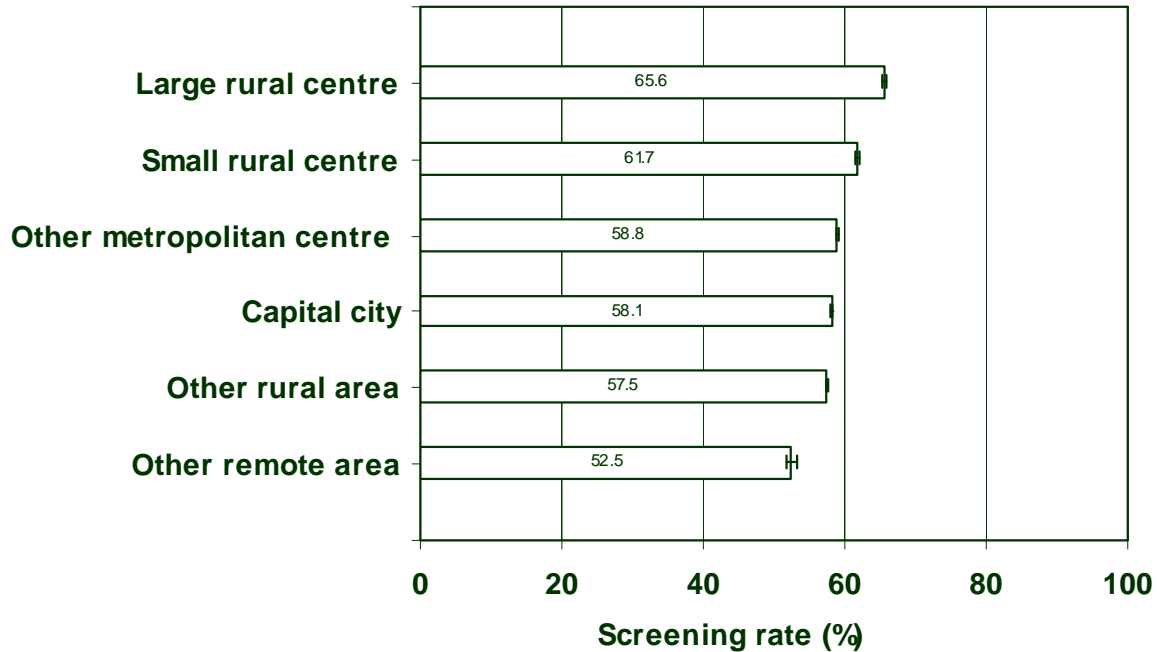
The recorded screening rate in Other Remote Areas is affected to an unknown extent by under-enumeration due to cross-border laboratory reporting issues (see Appendix 7). Altogether 15 LGAs are classified into this category, of which 11 LGAs are from the Far West (7) and Greater Murray (4) Area Health Services. Recorded screening rates for the Far West Area Health Service are likely to be affected more by under-enumeration due to inter-state laboratory reporting issues than the Greater Murray AHS due to a back log of data from one inter-state cytology laboratory.

Table 3.2: Biennial screening rates by NSW urban and rural areas for the reporting period of 1 January 1997 - 31 December 1998

Region	20 - 49 years		50 - 69 years		20 - 69 years	
	Women screened	Biennial rate (%) (95% CI)	Women screened	Biennial rate (%) (95% CI)	Women screened	Biennial rate (%) (95% CI)
Capital city	522,838	59.3 (59.2 - 59.4)	132,473	53.8 (53.6 - 53.9)	655,311	58.1 (58.0 - 58.2)
Other metropolitan centre	99,308	60.5 (60.4 - 60.7)	26,559	53.3 (53.0 - 53.6)	125,867	58.8 (58.7 - 59.0)
Large rural centre	40,692	66.8 (66.5 - 67.1)	11,009	61.4 (60.9 - 61.9)	51,701	65.6 (65.3 - 65.8)
Small rural centre	54,399	62.9 (62.7 - 63.2)	16,602	58.2 (57.8 - 58.6)	71,001	61.7 (61.5 - 61.9)
Other rural area	72,147	59.1 (58.9 - 59.3)	24,126	53.1 (52.8 - 53.5)	96,273	57.5 (57.3 - 57.6)
Other remote area	5,554	52.4 (51.8 - 53.1)	1,668	52.6 (51.4 - 53.9)	7,222	52.5 (51.9 - 53.1)
Urban	622,146	59.5 (59.4 - 59.6)	159,032	53.7 (53.6 - 53.8)	781,178	58.2 (58.2 - 58.3)
Rural-Remote	172,792	61.7 (61.6 - 61.8)	53,405	56.2 (56.0 - 56.4)	226,197	60.3 (60.2 - 60.4)
NSW total ¹	806,642	60.9 (60.8 - 60.9)	214,771	54.9 (54.8 - 55.0)	1,021,413	59.5 (59.4 - 59.5)

¹ NSW total includes data that can not be allocated to Region. Therefore the total number of women screened for NSW is greater than the sum of the regions.

FIGURE 2:
Biennial cervical screening rates by NSW regions



For the reporting period 1 January 1997 to 31 December 1998

Figure 2 summarises recorded biennial screening rates for the reporting period of 1 January 1997 to 31 December 1998, by NSW regions (age group 20 - 69 years). Large rural centre overall had a significantly higher screening rate (65.6%) than all other regions in NSW. Other remote areas had a significantly lower screening rate (52.5%) than all other regions in NSW. The screening rate in Other Remote Areas was affected to an unknown extent by under-enumeration due to cross-border laboratory reporting issues. Screening rates in the other regional classifications ranged between 57.5% and 65.6%.

3.1.3 Biennial cervical screening rates by Area Health Services in NSW

Comparing Area Health Services (see Table 3.3 and Figure 3), Mid North Coast (64.4%), Northern Sydney (63.9%), Central Coast (63.4%), New England (62.9%), Mid Western (61.7%), South Eastern Sydney (61.5%), Greater Murray (60.4%) and Hunter (60.4%) Area Health Services had significantly higher recorded screening rates than the NSW rate (59.5%).

The Illawarra (57.7%), Macquarie (57.4%), Wentworth (55.0%), Southern (54.9%), South Western Sydney (54.9%), Central Sydney (53.7%), Western Sydney (53.6%), and Far West (48.4%) Area Health Services had significantly lower recorded screening rates than NSW.

The recorded screening rate in the Northern Rivers (59.1%) Area Health Service did not differ significantly from the NSW rate.

The recorded screening rate in the 20-49 year age group (60.9%) was significantly and substantially higher than that in the 50-69 year age group (54.9%).

Recorded screening rates in the Far West, Greater Murray and the Southern Area Health Services were affected to an unknown extent by under-enumeration due to incomplete data reporting from inter-state laboratories. Screened women were under-enumerated in the Western Sydney, Wentworth, Mid North Coast, Hunter and Northern Rivers Area Health Services due to failure in allocation of women in certain postcode areas to a Local Government Area. Screened women were also under-enumerated in the South Western Sydney Area Health Service due to reporting problems from one laboratory.

Table 3.3: Biennial cervical screening rates by NSW Area Health Service for the reporting period of 1 January 1997 to 31 December 1998.

Area Health Service	Age 20 - 49 years		Age 50 - 69 years		Age 20 - 69 years	
	Women screened	Biennial rate (%) (95% CIs)	Women screened	Biennial rate (%) (95% CIs)	Women screened	Biennial rate (%) (95% CIs)
Mid North Coast ¹	27,278	64.1 (64.1 - 64.2)	9,808	65.1 (65.0 - 65.2)	37,086	64.4 (64.3 - 64.4)
Northern Sydney	111,176	65.4 (65.3 - 65.4)	33,700	59.6 (59.6 - 59.7)	144,876	63.9 (63.9 - 64.0)
Central Coast	34,091	65.5 (65.4 - 65.5)	10,019	57.1 (57.0 - 57.3)	44,110	63.4 (63.3 - 63.4)
New England	21,685	64.3 (64.3 - 64.4)	6,771	58.7 (58.6 - 58.9)	28,456	62.9 (62.8 - 63.0)
Mid Western	19,449	62.9 (62.8 - 63.0)	5,448	57.7 (57.6 - 57.9)	24,897	61.7 (61.6 - 61.8)
South Eastern Sydney	109,020	62.4 (62.4 - 62.4)	27,995	58.3 (58.2 - 58.4)	137,015	61.5 (61.5 - 61.6)
Greater Murray ¹	31,123	63.1 (63.1 - 63.2)	8,752	52.5 (52.4 - 52.6)	39,875	60.4 (60.4 - 60.5)
Hunter ¹	64,289	61.6 (61.5 - 61.6)	16,578	56.2 (56.2 - 56.3)	80,867	60.4 (60.4 - 60.5)
Northern Rivers ¹	28,521	60.8 (60.8 - 60.9)	8,772	54.1 (54.0 - 54.2)	37,293	59.1 (59.1 - 59.2)
Illawarra	40,468	60.7 (60.7 - 60.8)	11,467	49.0 (48.9 - 49.1)	51,935	57.7 (57.6 - 57.7)
Macquarie	11,635	59.1 (59.0 - 59.2)	3,331	52.0 (51.8 - 52.2)	14,966	57.4 (57.3 - 57.5)
Wentworth ¹	37,532	55.4 (55.4 - 55.5)	7,941	53.0 (52.8 - 53.1)	45,473	55.0 (54.9 - 55.0)
South Western Sydney ¹	91,529	56.5 (56.5 - 56.6)	19,800	48.2 (48.2 - 48.3)	111,329	54.9 (54.8 - 54.9)
Southern ¹	18,399	54.8 (54.7 - 54.8)	6,157	55.4 (55.3 - 55.5)	24,556	54.9 (54.8 - 55.0)
Central Sydney	66,813	56.2 (56.1 - 56.2)	15,227	45.0 (45.0 - 45.1)	82,040	53.7 (53.7 - 53.8)
Western Sydney ¹	77,458	54.1 (54.0 - 54.1)	19,304	51.7 (51.6 - 51.8)	96,762	53.6 (53.5 - 53.6)
Far West ¹	4,472	47.9 (47.8 - 48.1)	1,367	49.9 (49.6 - 50.1)	5,839	48.4 (48.2 - 48.5)
AHS not available	111,704		2,334		88,038	
NSW Total	806,642	60.9 (60.8 - 60.9)	214,771	54.9 (54.9 - 54.9)	1,021,413	59.5 (59.5 - 59.5)

¹ Area Health services may be affected by under enumeration

FIGURE 3:
Biennial cervical screening rates in NSW Area Health Services

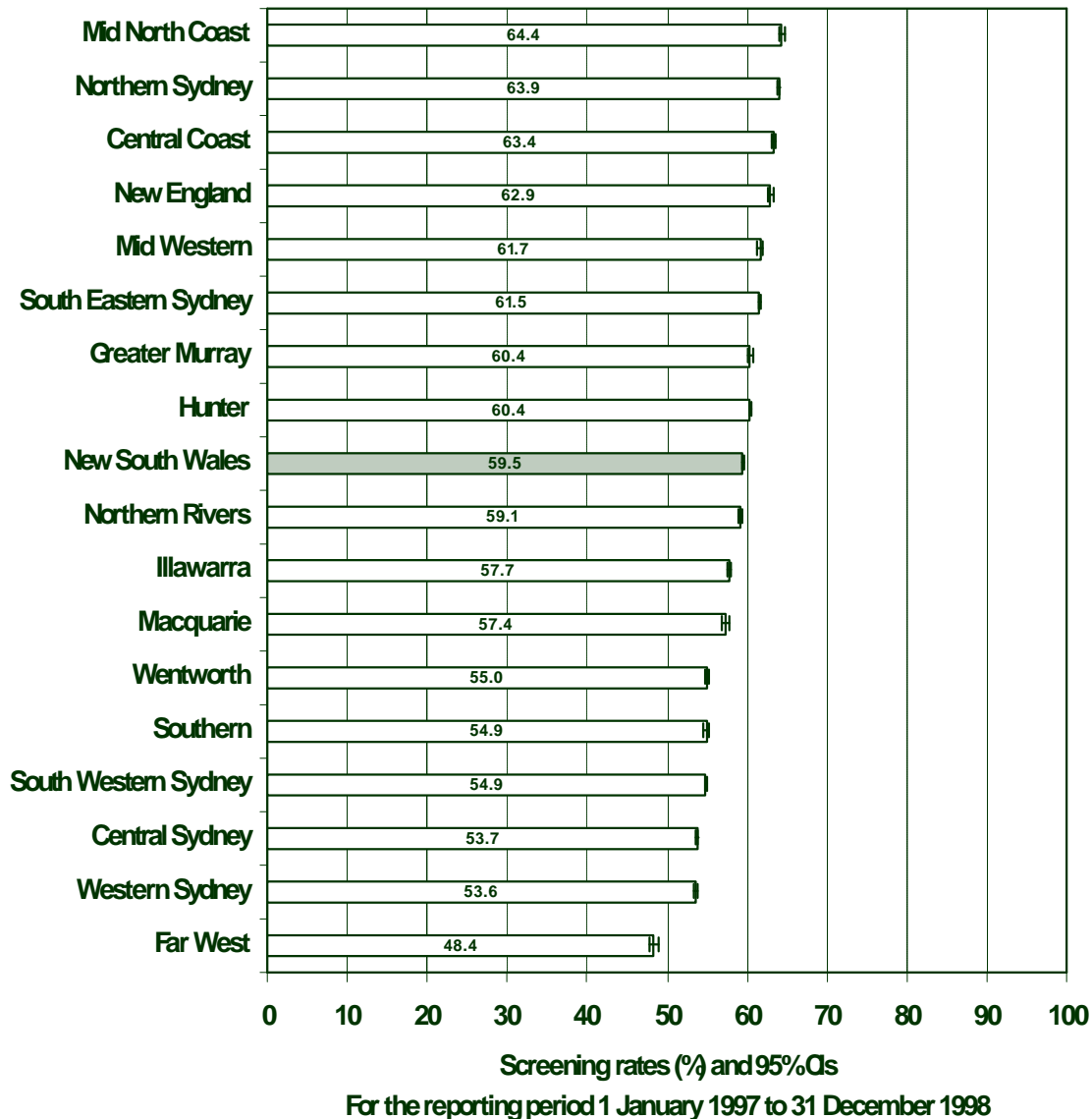


Figure 3 summarises recorded biennial screening rates for the twenty-four month reporting period (1 January 1997 - 31 December 1998) by Area Health Service, with 95% confidence intervals. Mid North Coast*, Northern Sydney, Central Coast, New England, Mid Western, SE Sydney, Greater Murray* and Hunter* Area Health Services had screening rates significantly higher than NSW. The Far West*, Western Sydney*, Central Sydney, South Western Sydney*, Southern*, Wentworth*, Macquarie and Illawarra AHSs had significantly lower rates. Screening rates in the Northern Rivers* AHS is similar to the NSW rate. (*Area Health Services affected to an unknown extent by under-enumeration of smears in some LGAs, see Appendix 7).

3.1.4 Biennial cervical screening rates by AHS and 5-year age groups

For the reporting period of 1 January 1997 to 31 December 1998, the biennial cervical screening rate for NSW was highest in the 30 - 34 year age group (65.2%) and lowest in the 65 - 69 year age group (39.7%). (Table 3.4)

In the 20-24 year age group, the lowest screening rate was observed in Central Sydney AHS (38.0%) and the highest in Mid North Coast AHS (60.5%). In the 25-29 year age group, the lowest screening rate was observed in the Far West AHS (48.7%) and highest in the Central Coast AHS (69.7%). Northern Sydney AHS (71.4%) had the highest screening rate in the 30-34 year age group, compared to the lowest in the Far West AHS (48.8%) in this age group. Among women aged 35-39 year, Northern Sydney AHS (70.5%) had the highest rate and Far West AHS (47.8%) the lowest. In the 5-year age groups of 40-44, 45-49 and 50-54 years, Northern Sydney AHS had the highest screening rate, with Far West AHS being the lowest. In the 55-59 year age group, Mid North Coast AHS (75.2%) had the highest screening rate, compared to the lowest rate in the South Western Sydney Area Health Service (51.9%). Among women aged 60-64 years, Central Sydney AHS (39.0%) had the lowest and Mid North Coast AHS the highest screening rate (63.3%). Similarly, in the 65-69 year age group, Central Sydney AHS (30.2%) had the lowest screening rate and Mid North Coast AHS (51.8%) the highest screening rate.

There were no specific patterns observed in the screening rate by 5-year age group. The 20-24 year age group and 60-64 & 65-69 year age groups remain the lowest screening groups in most AHSs of NSW.

Table 3.4: Biennial cervical screening rates in NSW by Area Health Service and 5-year age group for the reporting period of 1 January 1997 to 31 December 1998.

AHS	20-24	25-29	30-34	35-39	40-44	45-49	50-54	55-59	60-64	65-69
	No. of women screened (%)	No. of women screened (%)	No. of women screened (%)	No. of women screened (%)	No. of women screened (%)	No. of women screened (%)	No. of women screened (%)	No. of women screened (%)	No. of women screened (%)	No. of women screened (%)
Metropolitan AHS										
Central Coast	4,411 (58.8)	6,066 (69.7)	6,367 (66.1)	7,075 (67.4)	5,672 (63.9)	4,500 (65.7)	3,438 (63.1)	2,463 (66.7)	2,192 (53.3)	1,926 (45.0)
Central Sydney	7,892 (38.0)	14,009 (56.3)	14,118 (62.0)	12,462 (62.6)	10,141 (60.9)	8,190 (58.8)	6,170 (56.1)	4,022 (48.3)	2,947 (39.0)	2,088 (30.2)
Hunter	9,939 (54.8)	11,996 (65.5)	11,978 (65.3)	12,046 (62.4)	10,091 (60.2)	8,239 (60.9)	6,190 (60.1)	4,255 (64.9)	3,476 (53.6)	2,657 (43.3)
Illawarra	5,557 (49.1)	7,321 (65.0)	7,713 (65.2)	8,083 (63.6)	6,681 (61.8)	5,113 (58.7)	4,143 (57.5)	3,082 (56.1)	2,465 (44.7)	1,777 (34.2)
Northern Sydney	13,321 (47.5)	20,206 (66.1)	21,250 (71.4)	20,941 (70.5)	18,467 (68.4)	16,991 (68.0)	14,440 (69.2)	8,821 (64.6)	5,932 (52.9)	4,507 (41.8)
Sth Eastern Sydney	14,535 (44.3)	22,758 (63.1)	21,799 (69.2)	19,559 (68.1)	16,221 (66.3)	14,149 (67.1)	11,541 (67.8)	7,274 (64.5)	5,190 (51.3)	3,990 (41.6)
Sth Western Sydney	12,192 (43.1)	17,726 (59.7)	17,547 (60.5)	17,483 (59.7)	14,613 (58.0)	11,968 (58.6)	8,368 (57.2)	5,125 (51.9)	3,746 (43.0)	2,561 (32.7)
Wentworth	4,985 (44.0)	6,838 (57.3)	6,916 (58.8)	7,293 (56.9)	6,269 (57.1)	5,231 (58.8)	3,662 (59.5)	2,028 (57.6)	1,357 (46.8)	894 (37.0)
Western Sydney	10,489 (40.2)	15,096 (56.2)	14,862 (59.3)	14,040 (57.3)	12,227 (55.7)	10,744 (57.1)	8,661 (58.7)	5,087 (57.4)	3,299 (44.8)	2,257 (35.7)
Metropolitan total	83,321 (45.2)	122,016 (61.5)	122,550 (64.6)	118,982 (63.5)	100,382 (61.7)	85,125 (62.0)	66,613 (62.0)	42,157 (59.2)	30,604 (47.8)	22,657 (38.1)
Rural AHS										
Far West	653 (47.2)	861 (48.7)	838 (48.8)	864 (47.8)	701 (48.2)	555 (46.1)	500 (52.9)	366 (57.4)	273 (45.7)	228 (40.7)
Greater Murray	4,522 (57.1)	5,612 (66.4)	5,764 (66.7)	6,094 (63.9)	5,013 (62.2)	4,118 (61.6)	3,182 (59.0)	2,340 (57.9)	1,844 (48.6)	1,386 (40.2)
Macquarie	1,621 (56.8)	2,231 (64.2)	2,208 (59.5)	2,225 (58.7)	1,816 (55.3)	1,534 (59.7)	1,284 (59.3)	920 (58.2)	678 (46.9)	449 (37.0)
Mid North Coast	3,179 (60.5)	4,105 (66.2)	4,929 (65.1)	5,891 (63.2)	5,064 (63.4)	4,110 (66.4)	3,314 (68.4)	2,536 (75.2)	2,253 (63.3)	1,705 (51.8)
Mid Western	3,040 (58.5)	3,588 (68.6)	3,550 (64.9)	3,646 (62.2)	3,065 (60.8)	2,560 (62.0)	2,074 (62.1)	1,484 (67.2)	1,126 (53.8)	764 (42.5)
New England	3,189 (59.6)	3,832 (69.3)	3,970 (66.8)	4,155 (64.3)	3,565 (63.0)	2,974 (62.4)	2,519 (63.7)	1,922 (67.2)	1,394 (54.5)	936 (43.5)
Northern Rivers	3,531 (56.8)	4,266 (63.6)	5,008 (61.7)	6,005 (59.6)	5,502 (60.9)	4,209 (62.5)	3,037 (60.5)	2,209 (60.5)	1,955 (50.4)	1,571 (42.8)
Southern	2,265 (52.2)	3,041 (55.7)	3,403 (54.9)	3,812 (55.5)	3,232 (54.3)	2,646 (55.4)	2,220 (59.2)	1,670 (63.5)	1,304 (52.4)	963 (42.9)
Rural total	22,000 (57.1)	27,536 (64.3)	29,670 (62.6)	32,692 (60.9)	27,958 (60.2)	22,706 (61.3)	18,130 (61.6)	13,447 (64.1)	10,827 (53.0)	8,002 (43.5)
AHS Not Available	1,603	2,389	2,222	2,210	1,847	1,431	1,017	618	432	287
NSW Total	106,923 (48.0)	151,942 (63.0)	154,442 (65.2)	153,887 (63.8)	130,186 (62.2)	109,262 (62.7)	85,762 (62.7)	56,201 (60.9)	41,862 (49.6)	30,946 (39.7)

3.1.5 Biennial cervical screening rates by NSW local government area

Recorded biennial cervical screening rates by local government areas in NSW are presented in Table 3.5. The reporting period for recorded screening rates was 1 January 1997 to 31 December 1998.

It should be noted that even within an Area Health Services there were wide variations in recorded screening rates by Local Government Area. For example, in the Mid Western Area Health Service, with a recorded screening rate close to the NSW average, recorded screening rates by LGA ranged from 44% for Evans to 70% for Orange.

Table 3.5: Biennial cervical screening rates by Local Government Areas in NSW, for the reporting period 1 January 1997 - 31 December 1998

Local Government	Age 20- 49 years		Age 50 - 69 years		Age 20 - 69 years	
	Wome	Biennial rate (%)	Women	Biennial rate (%)	Women	Biennial rate(%)
CENTRAL COAST AREA HEALTH SERVICE						
Gosford	19,954	68.1 (68.0- 68.2)	5,778	60.9 (60.7 - 61.0)	25,732	66.3 (66.2- 66.4)
Wyong	14,137	62.1 (62.0- 62.2)	4,241	52.7 (52.6 - 52.9)	18,378	59.7 (59.6 - 59.7)
CENTRAL SYDNEY AREA HEALTH SERVICE						
Ashfield	5,400	52.1 (52.0 - 52.3)	1,239	41.6 (41.3 - 41.8)	6,639	49.8 (49.7 - 49.9)
Burwood	3,720	55.4 (55.3 - 55.6)	965	43.1 (42.9 - 43.4)	4,685	52.4 (52.2 - 52.5)
Canterbury	16,199	51.9 (51.8 - 52.0)	4,421	43.6 (43.5 - 43.8)	20,620	49.9 (49.8 - 49.9)
Concord	3,061	55.2 (55.0 - 55.4)	861	43.6 (43.3 - 43.9)	3,922	52.1 (52.0 - 52.3)
Drummoyne	5,147	63.6 (63.4 - 63.8)	1,339	48.7 (48.5 - 49.0)	6,486	59.8 (59.7 - 60.0)
Leichhardt	11,779	64.2 (64.1 - 64.3)	2,161	52.0 (51.8 - 52.2)	13,940	61.9 (61.8 - 62.0)
Marrickville	11,933	55.9 (55.8 - 56.0)	2,232	42.8 (42.6 - 43.0)	14,165	53.3 (53.3 - 53.4)
South Sydney	5,131	54.4 (54.2 - 54.5)	861	44.1 (43.8 - 44.4)	5,993	52.6 (52.5 - 52.7)
Strathfield	3,049	52.3 (52.1 - 52.5)	946	44.6 (44.3 - 44.9)	3,995	50.3 (50.1 - 50.4)
Sydney	1,394	68.0 (67.6 - 68.4)	202	68.5 (67.5 - 69.4)	1,596	68.1 (67.7 - 68.4)
FAR WEST AREA HEALTH SERVICE						
Balranald ¹	323	56.8 (56.1 - 57.4)	107	76.9 (75.4 - 78.3)	430	60.7 (60.1 - 61.3)
Bourke	472	62.0 (61.4 - 62.5)	113	70.2 (68.9 - 71.5)	585	63.4 (62.9 - 63.9)
Brewarrina	155	34.1 (33.5 - 34.6)	37	44.2 (42.8 - 45.7)	192	35.7 (35.2 - 36.2)
Broken Hill ¹	1,917	47.1 (46.8 - 47.3)	625	46.3 (45.9 - 46.6)	2,542	46.9 (46.7 - 47.0)
Central Darling ¹	238	50.8 (50.1 - 51.4)	72	60.4 (59.0 - 61.8)	310	52.7 (52.1 - 53.3)
Unincorporated ¹	44	23.1 (22.5 - 23.8)	11	25.0 (23.5 - 26.4)	55	23.5 (22.9 - 24.1)
Walgett	801	51.4 (51.0 - 51.7)	209	48.2 (47.6 - 48.9)	1010	50.7 (50.4 - 51.0)
Wentworth ¹	522	41.6 (41.2 - 41.9)	193	47.2 (46.6 - 47.9)	715	43.0 (42.7 - 43.3)
GREATER MURRAY AREA HEALTH SERVICE						
Albury ¹	6,543	72.7 (72.6 - 72.9)	1,567	61.8 (61.5 - 62.1)	8,110	70.3 (70.2 - 70.5)
Berrigan ¹	764	55.8 (55.4 - 56.2)	305	45.6 (45.1 - 46.1)	1,069	52.5 (52.2 - 52.8)
Bland	627	54.6 (54.2 - 55.0)	190	38.4 (37.8 - 38.9)	817	49.7 (49.4 - 50.1)
Carrathool ¹	349	60.2 (59.6 - 60.8)	99	53.1 (52.0 - 54.1)	448	58.5 (57.9 - 59.0)
Conargo ¹	93	34.3 (33.6 - 35.0)	41	41.6 (40.3 - 42.9)	134	36.3 (35.6 - 36.9)
Coolamon ¹	414	63.0 (62.3 - 63.6)	152	51.7 (50.9 - 52.5)	566	59.5 (59.0 - 60.0)
Cootamundra	794	56.7 (56.3 - 57.0)	272	44.8 (44.3 - 45.3)	1,066	53.1 (52.8 - 53.4)
Corowa ¹	961	69.2 (68.7 - 69.6)	371	52.9 (52.4 - 53.4)	1,332	63.7 (63.4 - 64.1)
Culcairn ¹	452	68.4 (67.7 - 69.0)	170	57.1 (56.2 - 58.0)	622	64.9 (64.4 - 65.4)
Deniliquin ¹	1,136	72.7 (72.2 - 73.1)	338	59.5 (58.9 - 60.2)	1,474	69.2 (68.8 - 69.5)
Griffith	2,885	63.3 (63.0 - 63.5)	725	53.5 (53.1 - 53.8)	3,610	61.0 (60.8 - 61.2)
Gundagai	448	68.0 (67.4 - 68.7)	166	59.7 (58.8 - 60.6)	614	65.6 (65.1 - 66.1)
Hay ¹	424	59.3 (58.7 - 59.8)	119	45.8 (45.0 - 46.7)	543	55.7 (55.2 - 56.2)
Holbrook ¹	264	58.1 (57.4 - 58.8)	112	57.7 (56.6 - 58.8)	376	58.0 (57.4 - 58.6)
Hume ¹	829	62.7 (62.3 - 63.2)	267	55.5 (54.8 - 56.2)	1,096	60.8 (60.4 - 61.2)
Jerilderie ¹	180	52.1 (51.4 - 52.9)	66	46.7 (45.6 - 47.9)	246	50.6 (49.9 - 51.2)
Junee ¹	486	49.4 (49.0 - 49.9)	139	39.8 (39.1 - 40.4)	625	46.9 (46.5 - 47.3)
Leeton	1,221	59.3 (59.0 - 59.6)	320	45.9 (45.4 - 46.4)	1,541	55.9 (55.6 - 56.2)
Lockhart ¹	383	63.0 (62.4 - 63.6)	122	45.0 (44.2 - 45.8)	505	57.4 (56.9 - 57.9)
Murray ¹	467	48.1 (47.7 - 48.5)	182	40.7 (40.1 - 41.3)	649	45.8 (45.4 - 46.1)
Murrumbidgee ¹	309	63.2 (62.5 - 63.9)	113	67.8 (66.6 - 69.1)	422	64.4 (63.8 - 65.0)
Narrandera ¹	718	59.1 (58.6 - 59.5)	210	44.2 (43.6 - 44.8)	928	54.9 (54.5 - 55.2)
Temora	753	73.3 (72.8 - 73.8)	255	58.7 (58.0 - 59.4)	1,008	69.0 (68.5 - 69.4)
Tumbarumba	386	60.7 (60.1 - 61.3)	115	43.9 (43.1 - 44.7)	501	55.8 (55.3 - 56.3)
Tumut	1,335	63.9 (63.6 - 64.2)	361	46.7 (46.3 - 47.2)	1,696	59.3 (59.0 - 59.6)
Urana ¹	207	81.2 (80.1 - 82.3)	71	61.0 (59.6 - 62.4)	278	74.8 (74.0 - 75.7)
Wagga Wagga ¹	7,238	60.4 (60.2 - 60.5)	1,721	54.4 (54.2 - 54.7)	8,959	59.1 (59.0 - 59.3)
Wakool ¹	429	51.7 (51.3 - 52.2)	174	51.5 (50.8 - 52.3)	603	51.7 (51.3 - 52.1)
Windouran ¹	28	43.4 (41.8 - 45.0)	9	36.9 (34.5 - 39.3)	37	41.6 (40.3 - 42.9)

¹ Local Government Areas which may be affected by under-enumeration

Table 3.5 (contd.): Biennial cervical screening rates by Local Government Areas in NSW, for the reporting period 1 January 1997 - 31 December 1998

Local Government	Age 20- 49 years		Age 50 - 69 years		Age 20 - 69 years	
	Wome	Biennial rate (%)	Women	Biennial rate (%)	Women	Biennial rate(%)
HUNTER AREA HEALTH SERVICE						
Cessnock	5,188	57.5 (57.3 - 57.7)	1,177	49.7 (49.4 - 50.0)	6,365	55.9 (55.7 - 56.0)
Dungog	851	59.3 (58.9 - 59.7)	261	57.3 (56.6 - 58.0)	1,112	58.8 (58.5 - 59.1)
Lake	21,429	62.6 (62.5 - 62.7)	6,378	58.8 (58.7 - 59.0)	27,807	61.7 (61.6 - 61.8)
Maitland	6,723	62.5 (62.4 - 62.7)	1,358	53.4 (53.1 - 53.7)	8,081	60.8 (60.7 - 60.9)
Merriwa	249	63.3 (62.5 - 64.1)	101	58.6 (57.5 - 59.8)	350	61.9 (61.2 - 62.5)
Murrurundi	212	57.3 (56.6 - 58.1)	85	51.9 (50.8 - 53.0)	297	55.7 (55.0 - 56.3)
Muswellbrook	1,997	64.9 (64.6 - 65.2)	433	62.2 (61.6 - 62.8)	2,430	64.4 (64.1 - 64.6)
Newcastle	17,896	61.8 (61.7 - 61.9)	4,260	55.5 (55.3 - 55.7)	22,156	60.5 (60.4 - 60.6)
Port Stephens ¹	5,861	58.3 (58.2 - 58.5)	1,747	54.6 (54.4 - 54.9)	7,608	57.4 (57.3 - 57.6)
Scone	1,382	72.1 (71.7 - 72.5)	372	74.0 (73.3 - 74.8)	1,754	72.5 (72.2 - 72.8)
Singleton	2,501	59.6 (59.4 - 59.9)	406	47.2 (46.7 - 47.6)	2,907	57.5 (57.3 - 57.7)
ILLAWARRA AREA HEALTH SERVICE						
Kiama	2,365	71.0 (70.7 - 71.3)	747	57.3 (56.9 - 57.7)	3,112	67.1 (66.9 - 67.4)
Shellharbour	7,167	61.8 (61.7 - 62.0)	1,546	46.8 (46.6 - 47.1)	8,713	58.5 (58.4 - 58.6)
Shoalhaven	8,489	60.9 (60.8 - 61.1)	3,198	50.0 (49.8 - 50.2)	11,687	57.5 (57.4 - 57.6)
Wollongong	22,447	59.4 (59.3 - 59.5)	5,976	48.2 (48.1 - 48.3)	28,423	56.6 (56.6 - 56.7)
MACQUARIE AREA HEALTH SERVICE						
Bogan	316	54.6 (54.0 - 55.2)	123	52.6 (51.7 - 53.5)	439	54.0 (53.5 - 54.6)
Cobar	605	50.3 (49.9 - 50.7)	115	43.8 (43.0 - 44.6)	720	49.1 (48.7 - 49.4)
Coolah	401	63.3 (62.6 - 63.9)	179	57.4 (56.6 - 58.2)	580	61.3 (60.8 - 61.8)
Coonabarabran	680	57.8 (57.4 - 58.2)	272	54.6 (54.0 - 55.3)	952	56.9 (56.5 - 57.2)
Coonamble	517	54.1 (53.6 - 54.6)	157	52.6 (51.8 - 53.5)	674	53.8 (53.4 - 54.2)
Dubbo	4,802	62.4 (62.2 - 62.5)	1,107	54.8 (54.5 - 55.1)	5,909	60.8 (60.6 - 60.9)
Gilgandra	451	54.8 (54.3 - 55.3)	154	48.9 (48.1 - 49.7)	605	53.2 (52.7 - 53.6)
Mudgee	1,939	60.5 (60.2 - 60.8)	594	51.4 (51.0 - 51.8)	2,533	58.1 (57.9 - 58.3)
Narromine	720	57.8 (57.4 - 58.2)	220	52.1 (51.4 - 52.8)	940	56.3 (56.0 - 56.7)
Warren	387	60.4 (59.8 - 61.0)	99	43.5 (42.6 - 44.3)	486	55.9 (55.5 - 56.4)
Wellington	817	53.9 (53.5 - 54.3)	311	47.1 (46.6 - 47.6)	1,128	51.8 (51.5 - 52.1)
MID NORTH COAST AREA HEALTH SERVICE						
Bellingen	1,498	70.5 (70.1 - 70.9)	518	73.9 (73.3 - 74.6)	2,016	71.4 (71.0 - 71.7)
Coffs Harbour	7,021	64.6 (64.4 - 64.7)	2,104	69.9 (69.6 - 70.2)	9,125	65.7 (65.6 - 65.9)
Gloucester	554	68.0 (67.5 - 68.6)	262	84.9 (83.9 - 85.9)	816	72.7 (72.2 - 73.2)
Great Lakes	2,737	63.8 (63.5 - 64.0)	1,284	59.7 (59.4 - 60.1)	4,021	62.4 (62.2 - 62.6)
Greater Taree	4,529	61.2 (61.1 - 61.4)	1,677	64.2 (63.9 - 64.5)	6,206	62.0 (61.9 - 62.2)
Hastings	6,537	68.7 (68.6 - 68.9)	2,416	64.3 (64.1 - 64.6)	8,953	67.5 (67.3 - 67.6)
Kempsey ¹	2,466	53.7 (53.5 - 53.9)	773	52.6 (52.2 - 52.9)	3,239	53.5 (53.3 - 53.6)
Nambucca	1,936	65.9 (65.6 - 66.2)	774	72.9 (72.4 - 73.5)	2,710	67.8 (67.5 - 68.0)
MID WESTERN AREA HEALTH SERVICE						
Bathurst	4,159	68.3 (68.1 - 68.5)	1,008	71.4 (70.9 - 71.8)	5,167	68.9 (68.7 - 69.1)
Blayney	736	62.2 (61.7 - 62.6)	243	64.3 (63.5 - 65.1)	979	62.7 (62.3 - 63.1)
Cabonne	1,214	60.5 (60.1 - 60.8)	433	53.1 (52.6 - 53.6)	1,647	58.3 (58.0 - 58.6)
Cowra	1,364	63.4 (63.0 - 63.7)	421	50.8 (50.3 - 51.2)	1,785	59.9 (59.6 - 60.1)
Evans	410	43.7 (43.3 - 44.1)	137	45.0 (44.2 - 45.7)	547	44.0 (43.7 - 44.4)
Forbes	1,097	61.2 (60.8 - 61.5)	369	59.4 (58.8 - 60.0)	1,466	60.7 (60.4 - 61.0)
Gr. Lithgow	2,000	53.6 (53.4 - 53.9)	453	41.7 (41.3 - 42.1)	2,453	50.9 (50.7 - 51.1)
Lachlan	785	60.9 (60.4 - 61.3)	272	59.7 (59.0 - 60.4)	1,057	60.6 (60.2 - 60.9)
Oberon	542	63.5 (63.0 - 64.1)	127	53.5 (52.6 - 54.5)	669	61.4 (60.9 - 61.8)
Orange	4,873	71.0 (70.8 - 71.2)	1,238	65.3 (64.9 - 65.7)	6,111	69.7 (69.6 - 69.9)
Parke	1,584	57.4 (57.1 - 57.6)	486	57.2 (56.7 - 57.7)	2,070	57.3 (57.1 - 57.6)
Rylstone	311	49.0 (48.5 - 49.6)	134	48.1 (47.3 - 48.9)	445	48.8 (48.3 - 49.2)
Weddin	374	59.9 (59.2 - 60.5)	127	45.9 (45.1 - 46.7)	501	55.6 (55.1 - 56.0)

¹ Local Government Areas which may be affected by under-enumeration

Table 3.5 (contd.): Biennial cervical screening rates by Local Government Areas in NSW, for the reporting period 1 January 1997 - 31 December 1998

Local Government	Age 20- 49 years Wome	Biennial rate (%)	Age 50 - 69 years Women	Biennial rate (%)	Age 20 - 69 years Women	Biennial rate(%)
NEW ENGLAND AREA HEALTH SERVICE						
Armidale ¹	3,431	73.7 (73.4 - 73.9)	920	86.8 (86.3 - 87.4)	4,351	76.1 (75.9 - 76.3)
Barraba	208	58.4 (57.6 - 59.2)	101	49.7 (48.7 - 50.7)	309	55.2 (54.6 - 55.8)
Bingara	162	50.5 (49.8 - 51.3)	88	44.3 (43.4 - 45.2)	250	48.2 (47.6 - 48.8)
Dumaresq	179	25.5 (25.1 - 25.8)	45	17.1 (16.6 - 17.6)	224	23.2 (22.9 - 23.5)
Glen Innes	914	80.7 (80.2 - 81.3)	291	65.9 (65.1 - 66.6)	1,205	76.6 (76.1 - 77.0)
Gunnedah	1,427	59.5 (59.2 - 59.8)	434	52.2 (51.7 - 52.7)	1,861	57.6 (57.4 - 57.9)
Guyra	494	67.5 (66.9 - 68.1)	194	61.8 (60.9 - 62.6)	688	65.8 (65.3 - 66.2)
Inverell	1,766	65.8 (65.5 - 66.1)	662	59.3 (58.9 - 59.8)	2,428	63.9 (63.6 - 64.2)
Manilla	453	81.3 (80.6 - 82.1)	188	71.3 (70.3 - 72.3)	641	78.1 (77.5 - 78.7)
Moree Plains	1,850	58.6 (58.3 - 58.8)	425	51.8 (51.3 - 52.3)	2,275	57.2 (56.9 - 57.4)
Narrabri	1,766	64.9 (64.6 - 65.2)	464	52.0 (51.5 - 52.5)	2,230	61.7 (61.5 - 62.0)
Nundle	99	44.4 (43.5 - 45.3)	59	48.5 (47.2 - 49.7)	158	45.8 (45.1 - 46.6)
Parry	1,109	49.3 (49.0 - 49.6)	365	42.1 (41.7 - 42.5)	1,474	47.3 (47.0 - 47.5)
Quirindi	512	57.6 (57.1 - 58.1)	190	51.9 (51.1 - 52.6)	702	55.9 (55.5 - 56.4)
Severn	201	41.5 (40.9 - 42.1)	92	41.1 (40.3 - 42.0)	293	41.4 (40.9 - 41.8)
Tamworth	5,138	75.2 (75.0 - 75.4)	1,569	70.6 (70.3 - 71.0)	6,707	74.1 (73.9 - 74.3)
Tenterfield	534	44.9 (44.5 - 45.2)	191	39.5 (39.0 - 40.1)	725	43.3 (43.0 - 43.6)
Uralla	647	55.0 (54.6 - 55.4)	216	55.7 (55.0 - 56.4)	863	55.2 (54.8 - 55.6)
Walcha	441	71.4 (70.7 - 72.0)	141	62.5 (61.5 - 63.5)	582	69.0 (68.4 - 69.6)
Yallaroi	354	56.8 (56.2 - 57.4)	136	60.4 (59.4 - 61.4)	490	57.7 (57.2 - 58.2)
NORTHERN RIVERS AREA HEALTH SERVICE						
Ballina	4,241	66.2 (66.0 - 66.4)	1,429	60.4 (60.1 - 60.7)	5,670	64.7 (64.5 - 64.8)
Byron ¹	3,905	66.9 (66.7 - 67.2)	844	58.1 (57.7 - 58.5)	4,749	65.2 (65.0 - 65.4)
Casino	1,366	68.1 (67.8 - 68.5)	386	60.1 (59.5 - 60.7)	1,752	66.2 (65.9 - 66.5)
Copmanhurst	299	38.2 (34.8 - 41.6)	90	35.3 (34.5 - 36.0)	389	38.0 (37.6 - 38.4)
Grafton ¹	2,271	73.1 (72.8 - 73.4)	663	60.3 (59.8 - 60.8)	2,934	69.8 (69.5 - 70.0)
Kyogle	936	52.6 (52.2 - 52.9)	252	43.2 (42.7 - 43.7)	1,188	50.3 (50.0 - 50.5)
Lismore	5,561	61.6 (61.4 - 61.7)	1,391	59.1 (58.8 - 59.5)	6,952	61.1 (60.9 - 61.2)
Maclean ¹	1,344	55.2 (54.9 - 55.5)	619	47.0 (46.6 - 47.4)	1,963	52.3 (52.1 - 52.5)
Nymboida	286	33.4 (33.0 - 33.7)	60	24.1 (23.5 - 24.7)	346	31.3 (30.9 - 31.6)
Richmond River	854	49.4 (49.0 - 49.7)	236	37.0 (36.6 - 37.5)	1,090	46.0 (45.8 - 46.3)
Tweed	6,890	58.3 (58.1 - 58.4)	2,616	53.8 (53.6 - 54.0)	9,506	57.0 (56.9 - 57.1)
Ulmarra	568	51.6 (51.2 - 52.0)	186	46.7 (46.0 - 47.3)	754	50.3 (49.9 - 50.7)
NORTHERN SYDNEY AREA HEALTH SERVICE						
Hornsby	19,532	63.3 (63.2 - 63.4)	6,189	59.9 (59.8 - 60.1)	25,721	62.4 (62.4 - 62.5)
Hunters Hill	1,630	69.2 (68.9 - 69.6)	577	61.8 (61.3 - 62.3)	2,207	67.1 (66.8 - 67.4)
Ku-ring-gai	13,615	68.1 (68.0 - 68.2)	5,983	65.6 (65.4 - 65.8)	19,598	67.3 (67.2 - 67.4)
Lane Cove	4,776	63.8 (63.6 - 64.0)	1,270	56.9 (56.6 - 57.2)	6,046	62.2 (62.0 - 62.4)
Manly	6,193	67.7 (67.5 - 67.8)	1,506	56.5 (56.2 - 56.8)	7,699	65.2 (65.0 - 65.3)
Mosman	5,127	73.8 (73.6 - 74.0)	1,362	65.7 (65.3 - 66.0)	6,489	72.0 (71.8 - 72.1)
North Sydney	11,086	64.0 (63.8 - 64.1)	2,337	59.5 (59.2 - 59.7)	13,423	63.1 (63.0 - 63.2)
Ryde	13,193	58.5 (58.4 - 58.6)	3,404	50.2 (50.0 - 50.4)	16,597	56.6 (56.5 - 56.6)
Warringah/ Pittwater	27,150	68.3 (68.0 - 68.6)	8,673	59.6 (59.1 - 60.2)	35,823	66.0 (65.7 - 66.3)
Willoughby	8,874	65.2 (65.1 - 65.3)	2,399	61.5 (61.3 - 61.8)	11,273	64.4 (64.3 - 64.5)

¹ Local Government Areas which may be affected by under-enumeration

Table 3.5 (contd.): Biennial cervical screening rates by Local Government Areas in NSW, for the reporting period 1 January 1997 - 31 December 1998

Local Government	Age 20- 49 years Wome Biennial rate (%)	Age 50 - 69 years Women Biennial rate (%)	Age 20 - 69 years Women Biennial rate(%)
SOUTH EASTERN SYDNEY AREA HEALTH SERVICE			
Botany	4,306 54.7 (54.5 - 54.8)	1,306 53.1 (52.8 - 53.4)	5,612 54.3 (54.1 - 54.4)
Hurstville	9,603 65.7 (65.6 - 65.8)	3,010 63.2 (63.0 - 63.4)	12,613 65.1 (65.0 - 65.2)
Kogarah	6,113 56.2 (56.0 - 56.3)	1,715 51.0 (50.8 - 51.2)	7,828 55.0 (54.8 - 55.1)
Lord Howe	63 90.7 (88.5 - 93.0)	15 80.3 (76.2 - 84.3)	78 88.5 (86.6 - 90.5)
Randwick	18,275 59.1 (59.0 - 59.2)	4,298 57.5 (57.3 - 57.7)	22,573 58.8 (58.7 - 58.9)
Rockdale	10,507 54.2 (54.1 - 54.3)	3,088 50.4 (50.3 - 50.6)	13,595 53.3 (53.2 - 53.4)
South Sydney	7,086 54.4 (54.2 - 54.5)	1,190 44.1 (43.8 - 44.3)	8,276 52.6 (52.5 - 52.7)
Sutherland	29,908 67.5 (67.4 - 67.5)	7,996 60.2 (60.1 - 60.4)	37,904 65.8 (65.7 - 65.9)
Sydney	1,924 68.0 (67.7 - 68.3)	279 68.5 (67.7 - 69.3)	2,203 68.1 (67.8 - 68.3)
Waverley ¹	11,234 64.8 (64.7 - 65.0)	2,225 60.2 (60.0 - 60.5)	13,459 64.0 (63.9 - 64.1)
Woollahra	10,001 74.7 (74.6 - 74.8)	2,873 77.2 (76.9 - 77.5)	12,874 75.2 (75.1 - 75.4)
SOUTH WESTERN AREA HEALTH SERVICE			
Bankstown	19,658 58.0 (57.9 - 58.0)	5,413 49.1 (48.9 - 49.2)	25,071 55.8 (55.7 - 55.8)
Camden	5,101 64.4 (64.3 - 64.6)	965 56.9 (56.6 - 57.3)	6,066 63.1 (63.0 - 63.3)
Campbelltown	19,136 56.7 (56.6 - 56.7)	3,105 48.1 (48.0 - 48.3)	22,241 55.3 (55.2 - 55.4)
Fairfield	22,550 53.7 (53.6 - 53.8)	4,940 47.4 (47.3 - 47.6)	27,490 52.4 (52.4 - 52.5)
Liverpool ¹	16,131 54.4 (54.3 - 54.4)	3,049 44.5 (44.4 - 44.7)	19,180 52.5 (52.4 - 52.6)
Wollondilly	4,718 66.1 (65.9 - 66.3)	1,498 53.5 (53.2 - 53.7)	6,216 62.5 (62.4 - 62.7)
Wingecarribee	4,235 56.8 (56.6 - 57.0)	830 45.9 (45.6 - 46.2)	5,065 54.7 (54.5 - 54.8)
SOUTHERN AREA HEALTH SERVICE			
Bega Valley	3,261 64.7 (64.5 - 64.9)	1,167 61.2 (60.8 - 61.5)	4,428 63.7 (63.6 - 63.9)
Bombala	279 54.5 (53.8 - 55.1)	109 57.4 (56.3 - 58.5)	388 55.3 (54.7 - 55.8)
Boorowa	199 46.3 (45.6 - 46.9)	67 39.8 (38.8 - 40.7)	266 44.4 (43.9 - 45.0)
Cooma-Monaro	1,107 63.1 (62.7 - 63.5)	414 69.9 (69.2 - 70.6)	1,521 64.8 (64.5 - 65.1)
Crookwell	453 62.7 (62.1 - 63.3)	175 57.0 (56.2 - 57.8)	628 61.0 (60.5 - 61.5)
Eurobodalla ¹	2,890 58.9 (58.7 - 59.1)	1,386 59.2 (58.9 - 59.5)	4,276 59.0 (58.8 - 59.2)
Goulburn	2,538 64.4 (64.2 - 64.7)	684 58.3 (57.8 - 58.7)	3,222 63.0 (62.8 - 63.2)
Gunning	204 48.1 (47.4 - 48.7)	62 43.1 (42.1 - 44.2)	266 46.8 (46.3 - 47.4)
Harden	325 51.5 (50.9 - 52.0)	112 40.7 (39.9 - 41.4)	437 48.2 (47.7 - 48.6)
Mulwaree	332 31.2 (30.9 - 31.5)	151 36.0 (35.5 - 36.6)	483 32.6 (32.3 - 32.9)
Queanbeyan	3,342 51.1 (50.9 - 51.2)	754 56.3 (55.9 - 56.7)	4,096 52.0 (51.8 - 52.1)
Snowy River	605 46.5 (46.1 - 46.8)	167 52.7 (51.9 - 53.5)	772 47.7 (47.4 - 48.0)
Tallaganda	252 51.2 (50.5 - 51.8)	90 51.5 (50.4 - 52.5)	342 51.3 (50.7 - 51.8)
Yarrowlumla	800 39.2 (38.9 - 39.5)	221 44.2 (43.6 - 44.8)	1,021 40.2 (39.9 - 40.4)
Yass	558 30.9 (30.7 - 31.2)	223 37.7 (37.2 - 38.2)	781 32.6 (32.4 - 32.9)
Young	1,254 62.9 (62.5 - 63.2)	375 55.7 (55.1 - 56.2)	1,629 61.0 (60.7 - 61.3)
WENTWORTH AREA HEALTH SERVICE			
Blue Mountains	9,718 63.1 (62.9 - 63.2)	2,810 59.5 (59.3 - 59.8)	12,528 62.2 (62.1 - 62.3)
Hawkesbury ¹	7,859 58.5 (58.4 - 58.6)	1,546 54.1 (53.8 - 54.3)	9,405 57.7 (57.6 - 57.8)
Penrith ¹	19,955 51.3 (51.3 - 51.4)	3,585 48.4 (48.2 - 48.5)	23,540 50.9 (50.8 - 50.9)
WESTERN SYDNEY AREA HEALTH SERVICE			
Auburn ¹	6,303 54.1 (53.9 - 54.2)	1,282 47.8 (47.5 - 48.0)	7,585 52.9 (52.8 - 53.0)
Baulkham Hills ¹	15,596 58.2 (58.1 - 58.2)	5,244 61.5 (61.3 - 61.7)	20,840 59.0 (58.9 - 59.0)
Blacktown ¹	27,770 50.7 (50.6 - 50.8)	5,574 45.1 (45.0 - 45.2)	33,344 49.7 (49.6 - 49.7)
Holroyd	10,500 57.2 (57.1 - 57.3)	2,763 51.7 (51.5 - 51.9)	13,263 56.0 (55.9 - 56.1)
Parramatta	17,289 54.6 (54.5 - 54.7)	4,441 52.7 (52.6 - 52.9)	21,730 54.2 (54.1 - 54.3)

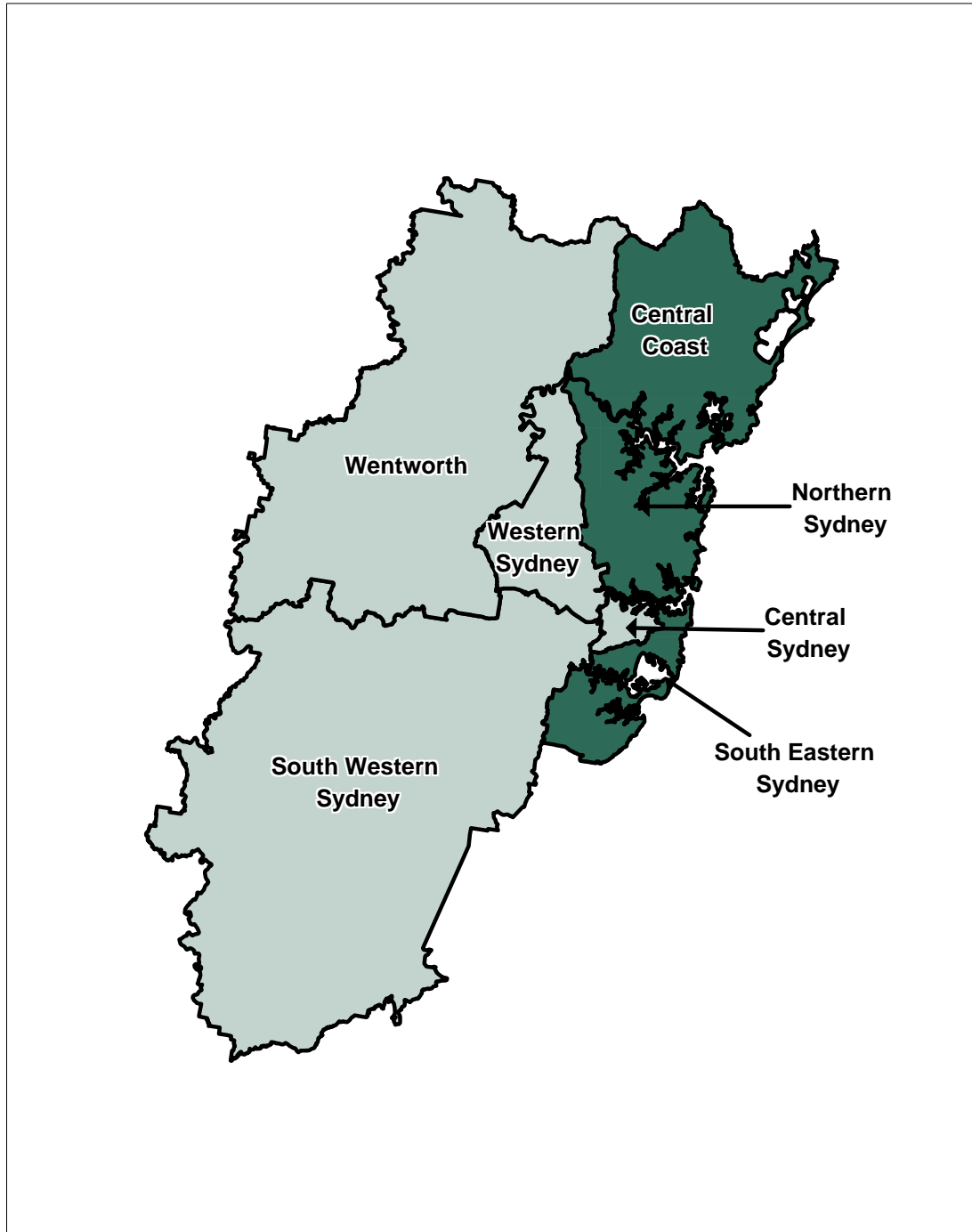
¹ Local Government Areas which may be affected by under-enumeration

FIGURE 4: Biennial cervical screening rates in Area Health Services for the reporting period 1 January 1997 - 31 December 1998



Screening Rates (%)	
□ 1 (Low)	= 50 or less
□ 2	= 50.1 to 55
□ 3	= 55.1 to 60
■ 4 (High)	= 60.1 or more

Figure 4 (cont): Biennial cervical screening rates in NSW Area Health Services for the reporting period 1 January 1997 - 31 December 1998



Screening Rates (%)

1 (low)	= 50 or less
2	= 50.1 to 55
3	= 55.1 to 60
4 (high)	= 60.1 or more

3.1.6 Biennial cervical screening rates by socio-economic status in NSW

Local Government Areas (LGAs) were assigned a SES indicator, using the 1991 Australian Bureau of Statistics socio-economic index for areas³. LGAs were partitioned into five quintiles of SES, with approximately equal populations in each quintile. It should be noted that the coding pattern of SES quintiles are as follows:

Code	Description
1	Highest SES quintile
2	Second highest SES Quintile
3	Median
4	Second lowest SES quintile
5	Lowest SES quintile

Recorded screening rates varied with socio-economic status in both Urban NSW and NSW as a whole. Screening rates ranged from 64.3% for the highest SES quintile (1), to 55.2% for the lowest SES quintile (5) in NSW. The second highest (2) and median SES quintiles (3) exhibited an intermediate screening rate of about 58%. In Urban NSW, screening rates ranged from 65.2% for the highest SES quintile (1), to 54.0% in the second lowest SES quintile (4). The effect of SES is accentuated in the 50 - 69 year age group, where a sharper decline in recorded screening rates occurred from the highest SES quintile to lower quintiles.

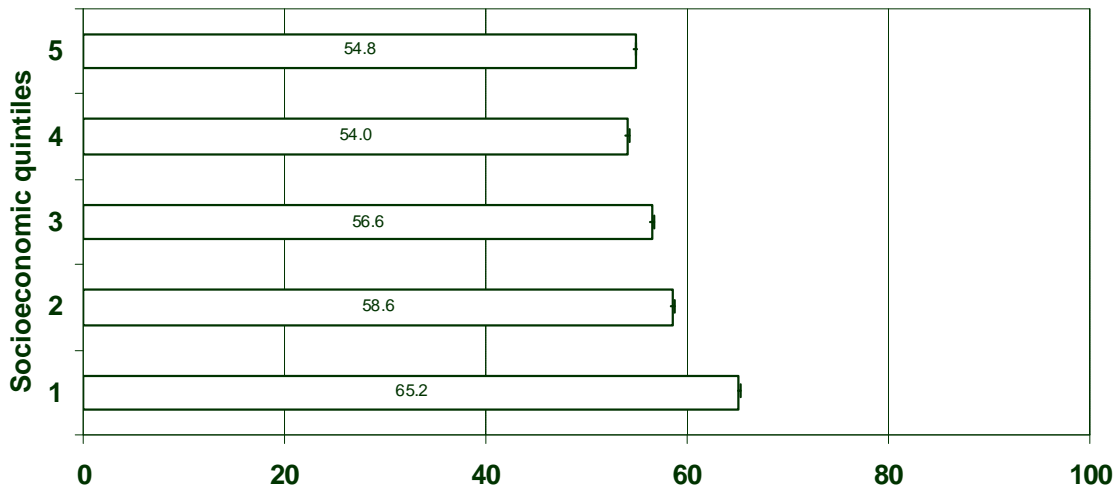
Recorded screening rates by socio-economic category in rural and remote areas did not show any particular pattern, most probably due to the social heterogeneity of small populations in Rural NSW.

**Table 3.6 Biennial cervical screening rates by socio-economic status in NSW
For the reporting period 1 January 1997 to 31 December 1998**

Socio-economic status	Age 20-49 years		Age 50-69 years		Age 20-69 years	
	Women screened	Biennial rate (%) (95% CIs)	Women screened	Biennial rate (%) (95% CIs)	Women screened	Biennial rate (%) (95% CIs)
Urban						
1 (High)	189,978	65.6 (65.4 - 65.7)	56,050	64.0 (63.7 - 64.2)	246,028	65.2 (65.1 - 65.3)
2	119,311	59.9 (59.7 - 60.0)	29,575	53.8 (53.5 - 54.1)	148,886	58.6 (58.4 - 58.7)
3	115,528	57.9 (57.7 - 58.0)	28,541	51.8 (51.5 - 52.1)	144,069	56.6 (56.4 - 56.7)
4	89,648	55.7 (55.5 - 55.9)	19,529	47.5 (47.1 - 47.8)	109,177	54.0 (53.9 - 54.2)
5 (Low)	107,681	55.9 (55.8 - 56.1)	25,337	50.5 (50.2 - 50.8)	133,018	54.8 (54.7 - 55.0)
NSW Total (Urban + Rural¹)						
1 (High)	194,016	64.3 (64.2 - 64.4)	57,375	63.0 (62.8 - 63.3)	251,391	64.3 (64.2 - 64.4)
2	156,551	58.8 (58.7 - 58.9)	40,153	53.8 (53.5 - 54.0)	196,704	58.8 (58.7 - 58.9)
3	164,512	58.3 (58.2 - 58.4)	42,211	53.0 (52.7 - 53.2)	206,723	58.3 (58.2 - 58.4)
4	131,167	55.6 (55.4 - 55.7)	33,588	49.3 (49.1 - 49.6)	164,755	55.6 (55.4 - 55.7)
5 (Low)	148,763	55.2 (55.1 - 55.4)	38,940	50.2 (49.9 - 50.4)	187,703	55.2 (55.1 - 55.4)
NSW	806,642	60.9 (60.8 - 61.0)	214,771	54.9 (54.8 - 55.0)	1,021,413	59.5 (59.4 - 59.6)

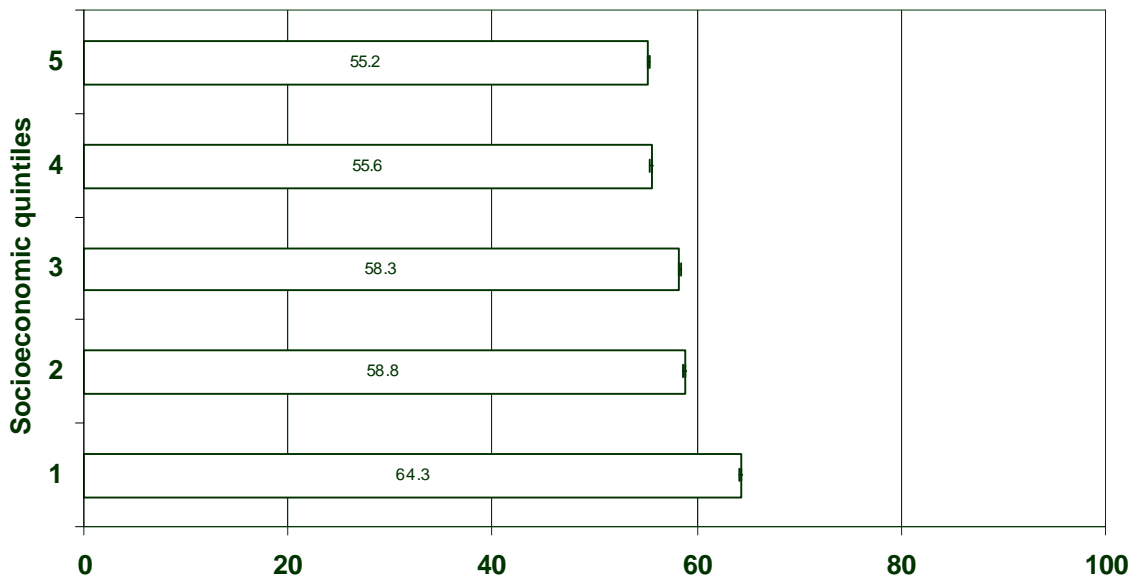
¹ Based on aggregation of municipalities

FIGURE 5:
Biennial screening rates by socioeconomic quintile in
Urban NSW (20 - 69 year)



Screening Rates (%) (95% C.I.)
For the reporting period of 1 January 1997 to 31 December 1998

FIGURE 6:
Biennial screening rates by socioeconomic quintile
in NSW (20 - 69 year)



Screening Rates (%) (95% C.I.)
For the reporting period of 1 January 1997 to 31 December 1998

3.1.7 Biennial cervical screening rates by NSW Divisions of General Practice

Divisions of General Practice (DGP) are divided into two regional groups for this report: Metropolitan and Rural. The metropolitan category comprised 20 DGPs, and the Rural category 22 DGPs. (For further description see Appendix 10)

Metropolitan DGP

The Northern Sydney (67.8%), Manly Warringah (67.4%), Sutherland (66.0%), Eastern Sydney (65.9%), Hornsby Ku-Ring-Gai (63.4%), NSW Central Coast (62.2%) and Blue Mountains (61.7%) DGPs had significantly higher recorded screening rates than NSW (59.5%). (Table 3.7)

All other DGPs in the metropolitan category had significantly lower rates than NSW (Table 3.7 & Figure 7).

Recorded screening rates in the Bankstown, Fairfield, Hawkesbury, Hunter Urban, Hornsby Ku-Ring-Gai, Liverpool, Nepean and the Western Sydney DGPs may be under-enumerated due to laboratory reporting delays and the failure of allocation of women in certain postcode areas to an LGA. Women screened of unknown age affects significantly some DGPs, for instance the Northern Sydney DGP.

Rural DGP

In the rural DGPs, Border (68.6%), North West Slopes (65.2%), North East Victorian (63.4%), Southern Highlands (61.9%) and New England (61.7%) DGPs had significantly higher recorded screening rates than NSW (59.5%). (Table 3.8 and Figure 8)

The Barwon (58.7%), Murrumbidgee (58.3%), Shoalhaven (57.8%), Murray Plains (57.6%), Port Macquarie (57.5%), Hunter Rural (56.9%), Tweed Valley (56.1%), Dubbo Plains (55.5%), NSW Outback (50.1%), South East NSW (47.9%), Mallee (47.5%), ACT (45.9%) and the Barrier (45.1%) DGPs had significantly lower recorded screening rates than NSW.

All other divisions of general practice had screening rates similar to NSW. (See Table 3.8 and Figure 8). Screening rates may be under-enumerated in the Barrier, Mallee, New England, NSW Outback, Port Macquarie and the South East NSW DGPs due to inter-state laboratory reporting delays and failure in allocation of women in certain post codes to an LGA.

Table 3.7: Biennial cervical screening rates by Divisions of General Practice in NSW (1 January 1997 - 31 December 1998)

GP Division Names	Age 20 - 49 years		Age 50 - 69 years		Age 20 - 69 years	
	Women screened	Biennial rate (%) (95% CI)	Women screened	Biennial rate (%) (95% CI)	Women screened	Biennial rate (%) (95% CI)
Metropolitan GP Divisions						
Bankstown DGP ¹	18,455	57.9 (57.3 - 58.4)	5,053	49.9 (49.2 - 50.6)	23,509	56.0 (55.5 - 56.4)
Blue Mountains DGP	9,718	62.8 (62.1 - 63.6)	2,810	58.1 (57.1 - 59.1)	12,528	61.7 (61.0 - 62.4)
Canterbury DGP	17,306	54.0 (53.4 - 54.5)	4,756	53.1 (52.4 - 53.9)	22,062	53.8 (53.3 - 54.3)
Central Sydney DGP	49,312	59.4 (59.1 - 59.7)	10,512	55.4 (54.9 - 55.9)	59,824	58.6 (58.3 - 58.9)
Eastern Sydney DGP	28,081	65.7 (65.3 - 66.2)	6,136	67.0 (66.3 - 67.7)	34,217	65.9 (65.5 - 66.4)
Fairfield Health Service DGP ¹	26,431	54.3 (53.8 - 54.7)	6,013	48.8 (48.2 - 49.5)	32,443	53.2 (52.8 - 53.6)
Hawkesbury DGP ¹	10,377	56.7 (56.0 - 57.4)	2,119	51.9 (50.8 - 52.9)	12,496	55.8 (55.2 - 56.5)
Hornsby Ku-Ring-Gai DGP ¹	51,751	63.0 (62.7 - 63.3)	17,026	64.4 (64.0 - 64.9)	68,777	63.4 (63.1 - 63.6)
Hunter Urban DGP ¹	50,441	60.9 (60.6 - 61.3)	13,294	49.6 (49.2 - 50.1)	63,735	58.2 (57.9 - 58.5)
Illawarra DGP	31,967	60.8 (60.4 - 61.2)	8,265	49.3 (48.8 - 49.9)	40,232	58.0 (57.6 - 58.4)
Liverpool DGP ¹	17,359	54.7 (54.2 - 55.3)	3,318	45.8 (45.0 - 46.7)	20,677	53.1 (52.6 - 53.6)
Macarthur DGP	27,270	57.9 (57.5 - 58.4)	4,669	49.9 (49.2 - 50.6)	31,939	56.6 (56.2 - 57.0)
Manly Warringah DGP	32,090	68.3 (67.9 - 68.7)	9,779	64.7 (64.1 - 65.2)	41,869	67.4 (67.1 - 67.8)
Nepean DGP ¹	20,110	51.4 (50.9 - 51.9)	3,625	47.1 (46.3 - 47.9)	23,735	50.7 (50.2 - 51.1)
Northern Sydney DGP	33,839	67.6 (67.2 - 68.0)	8,965	68.7 (68.1 - 69.2)	42,804	67.8 (67.5 - 68.2)
NSW Central Coast DGP	34,008	65.0 (64.6 - 65.4)	9,994	54.1 (53.6 - 54.6)	44,002	62.2 (61.8 - 62.5)
South Eastern Sydney DGP	25,727	58.6 (58.1 - 59.1)	6,188	57.1 (56.4 - 57.7)	31,915	58.3 (57.9 - 58.7)
St George District DGP	26,598	58.0 (57.6 - 58.5)	7,879	55.0 (54.5 - 55.6)	34,476	57.3 (56.9 - 57.7)
Sutherland DGP	29,824	67.5 (67.1 - 68.0)	7,974	60.8 (60.2 - 61.4)	37,798	66.0 (65.6 - 66.4)
Western Sydney DGP ¹	64,250	53.6 (53.3 - 53.9)	15,559	50.4 (50.0 - 50.8)	79,810	53.0 (52.7 - 53.2)
Metropolitan DGP Total ²	604,913	59.9 (59.8 - 59.9)	153,933	55.3 (55.1 - 55.4)	758,847	58.9 (58.8 - 58.9)

¹ Division of General Practice which may be affected by under-enumeration

² Due to rounding effect Metropolitan DGP total may not equal to the sum of individual DGPs

Table 3.8: Biennial cervical screening rates by Divisions of General Practice in NSW (1 January 1997 - 31 December 1998)

GP Division Names	Age 20 - 49 years		Age 50 - 69 years		Age 20 - 69 years	
	Women screened	Biennial rate (%) (95% CI)	Women screened	Biennial rate (%) (95% CI)	Women screened	Biennial rate (%) (95% CI)
<i>Rural GP Divisions</i>						
ACT DGP	1,273	45.9 (44.6 - 47.2)	315	46.1 (43.5 - 48.8)	1,588	45.9 (44.7 - 47.1)
Barrier DGP ¹	2,162	46.2 (45.1 - 47.2)	698	42.1 (40.4 - 43.7)	2,860	45.1 (44.2 - 46.0)
Barwon DGP	6,219	60.9 (60.2 - 61.6)	1,826	52.2 (51.0 - 53.3)	8,046	58.7 (58.1 - 59.2)
Border DGP	9,141	71.2 (70.6 - 71.7)	2,482	60.6 (59.6 - 61.7)	11,624	68.6 (68.1 - 69.1)
Dubbo Plains DGP	10,412	57.9 (57.4 - 58.4)	3,024	48.5 (47.6 - 49.4)	13,436	55.5 (55.0 - 55.9)
Hunter Rural DGP	21,568	59.8 (59.5 - 60.2)	6,471	48.9 (48.3 - 49.5)	28,039	56.9 (56.6 - 57.2)
Mallee DGP ¹	830	46.7 (45.0 - 48.3)	294	50.2 (47.3 - 53.1)	1,124	47.5 (46.1 - 49.0)
Mid North Coast DGP	13,923	62.1 (61.7 - 62.6)	4,435	53.6 (52.9 - 54.4)	18,358	59.8 (59.4 - 60.2)
Murray Plains DGP	1,962	59.6 (58.4 - 60.8)	666	52.5 (50.5 - 54.5)	2,628	57.6 (56.6 - 58.7)
Murrumbidgee DGP	7,020	60.6 (60.0 - 61.3)	2,032	51.5 (50.4 - 52.7)	9,052	58.3 (57.8 - 58.9)
New England DGP ¹	9,474	63.3 (62.7 - 63.8)	2,977	57.3 (56.3 - 58.3)	12,451	61.7 (61.2 - 62.2)
North East Victorian DGP	45	66.1 (58.0 - 74.2)	14	55.9 (42.0 - 69.9)	58	63.4 (56.3 - 70.4)
North West Slopes (NSW) DGP	7,426	67.2 (66.5 - 67.8)	2,368	59.9 (58.8 - 60.9)	9,794	65.2 (64.7 - 65.8)
Northern Rivers DGP	18,073	61.7 (61.3 - 62.1)	5,121	52.4 (51.7 - 53.1)	23,195	59.4 (59.0 - 59.7)
NSW Central West DGP	20,540	61.9 (61.5 - 62.2)	5,756	51.3 (50.7 - 52.0)	26,296	59.2 (58.9 - 59.5)
NSW Outback DGP ¹	1,950	50.9 (49.8 - 52.1)	465	46.7 (44.5 - 49.0)	2,415	50.1 (49.1 - 51.1)
Port Macquarie DGP ¹	9,237	61.7 (61.2 - 62.3)	3,270	48.1 (47.2 - 48.9)	12,508	57.5 (57.0 - 57.9)
Shoalhaven DGP	6,567	61.0 (60.4 - 61.7)	2,474	50.8 (49.8 - 51.8)	9,041	57.8 (57.3 - 58.4)
South East NSW DGP ¹	15,818	47.1 (46.7 - 47.4)	5,698	50.3 (49.6 - 50.9)	21,515	47.9 (47.5 - 48.2)
Southern Highlands DGP	5,133	65.0 (64.3 - 65.8)	1,601	53.6 (52.3 - 54.9)	6,734	61.9 (61.2 - 62.5)
Tweed Valley DGP	6,941	58.1 (57.5 - 58.7)	2,601	51.2 (50.2 - 52.2)	9,542	56.1 (55.5 - 56.6)
Wagga Wagga DGP	14,135	61.5 (61.0 - 61.9)	3,961	53.9 (53.1 - 54.7)	18,096	59.6 (59.2 - 60.0)
Rural GP Divisions Total	189,849	59.7 (59.5 - 59.8)	58,550	51.8 (51.6 - 52.0)	248,399	57.6 (57.5 - 57.7)
GP Division Total	794,763	59.8 (59.7 - 59.9)	212,483	54.3 (54.2 - 54.4)	1,007,246	58.5 (58.5 - 58.6)
NSW Total	806,642	60.9 (60.8 - 61.0)	214,771	54.9 (54.8 - 55.0)	1,021,413	59.5 (59.4 - 59.6)

¹ Division of General Practice which may be affected by under-enumeration

**FIGURE 7:
Biennial cervical screening rate in 20-69 year age group
by DGP (Metropolitan)**

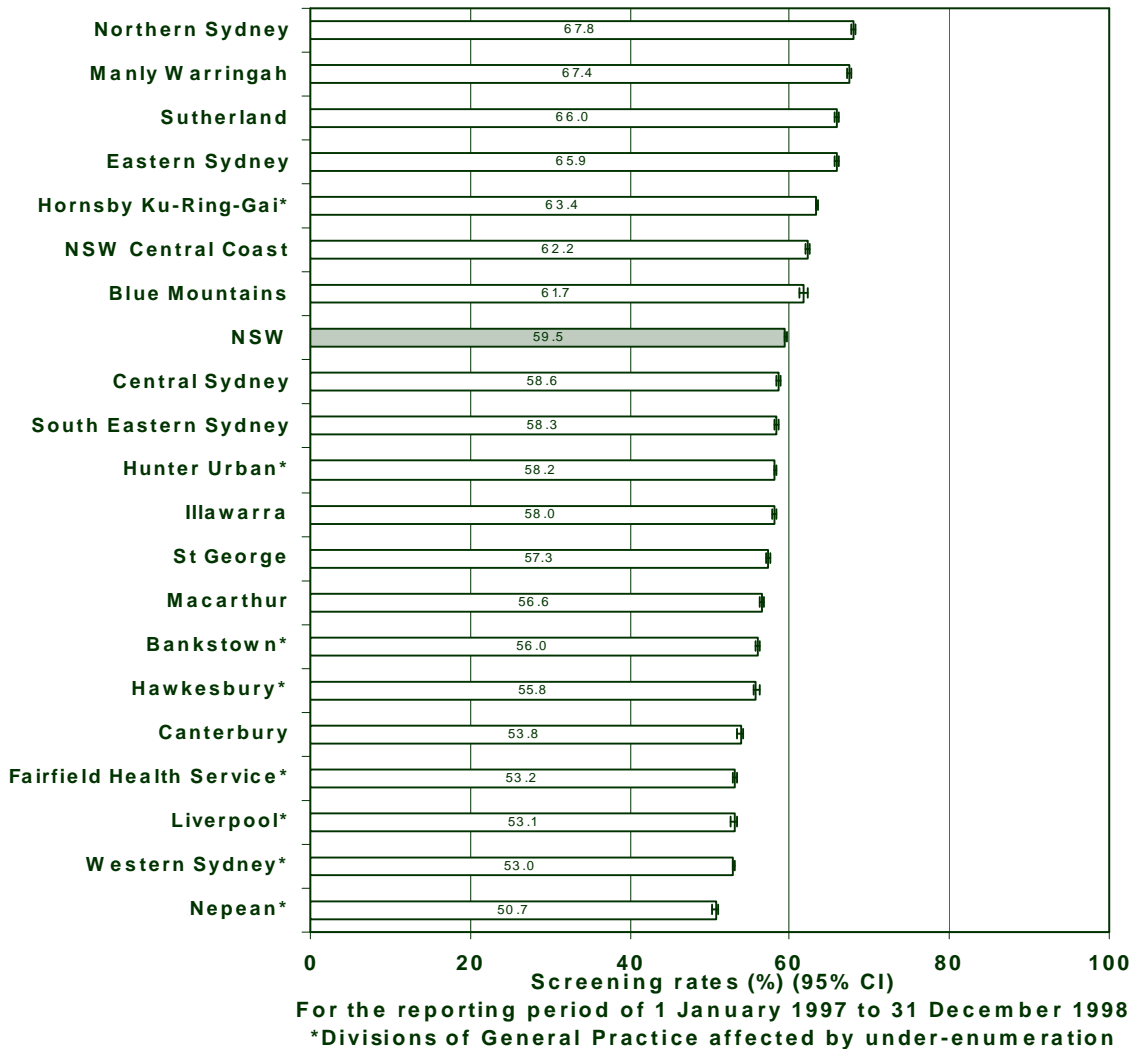
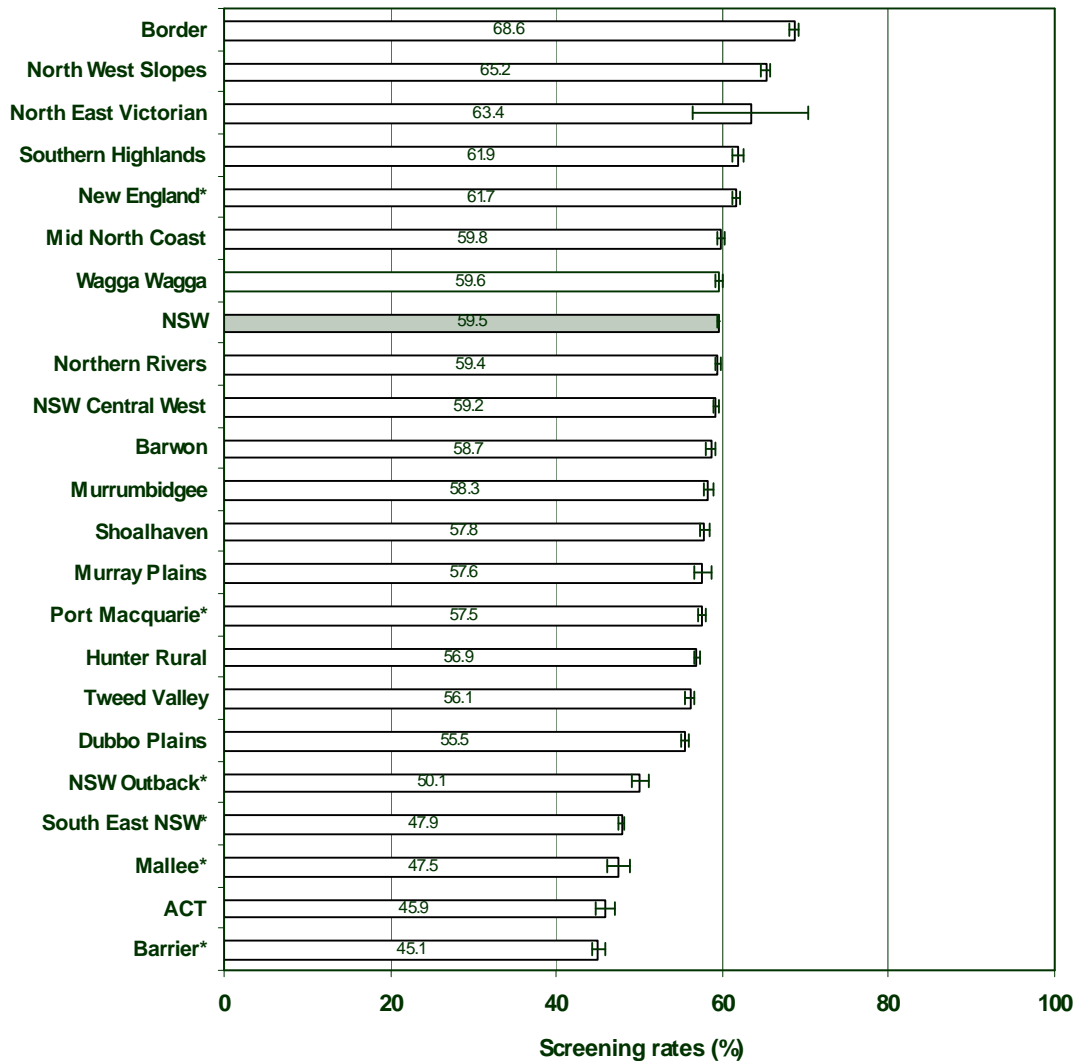


Figure 7 summarises recorded biennial screening rates for the reporting period 1 January 1997 - 31 December 1998, by metropolitan Division of General Practices in NSW. Northern Sydney, Manly Warringah, Sutherland, Eastern Sydney, Hornsby Ku-Ring-Gai*, NSW Central Coast and Blue Mountains divisions had significantly higher recorded screening rates than NSW overall (59.5%). Nepean*, Western Sydney*, Liverpool*, Fairfield Health Service*, Canterbury, Hawkesbury*, Bankstown*, Macarthur, St George, Illawarra, Hunter Urban*, South Eastern Sydney and Central Sydney divisions had significantly lower recorded screening rates than NSW.

FIGURE 8:
Biennial cervical screening rate in 20-69 year age group by
DGP (Rural)



For the reporting period of 1 January 1997 to 31 December 1998

*Divisions of General Practice affected by under-enumeration

Figure 8 summarises recorded biennial screening rates for the reporting period 1 January 1997 - 31 December 1998, by rural Division of General Practices in NSW. Border, North West Slopes, Southern Highlands and New England* divisions had significantly higher recorded screening rates than NSW overall (59.5%). Barrier*, ACT, Mallee*, South East NSW*, NSW Outback*, Dubbo Plains, Tweed Valley, Hunter Rural, Port Macquarie*, Murray Plains, Shoalhaven and Murrumbidgee divisions had significantly lower recorded screening rates than NSW overall. Recorded screening rates in the Barwon, NSW Central West, Northern Rivers, Wagga Wagga, Mid North Coast and North East Victorian divisions were similar to that of NSW.

3.2 TRIENNIAL CERVICAL SCREENING RATES (August 1996 - July 1999)

3.2.1 Triennial cervical screening rates by 5-year age groups in NSW

With the recent availability of 36-month cervical screening data, it is now possible to provide triennial participation rates for NSW by 5-year age groups and by Area Health Services. The 3-yearly screening rate for the reporting period of 1 August 1996 to 31 July 1999 in NSW was 72.1% for the 20 - 69 year age group and 62.9% for the 50 - 69 year age group.

Triennial cervical screening rates by 5-year age group (see Table 3.9) show that the 20-49 year age group had a significantly and substantially higher screening rate (74.9%) than the 50 - 69 year age group (62.9%). The highest triennial screening rate was observed in the 30 - 34 year age group (79.4%), and lowest in the 65 - 69 year age group (46.5%).

**Table 3.9: Triennial cervical screening rates by age group in NSW women
For the reporting period 1 August 1996 to 31 July 1999**

Age-group (years)	Women screened	Triennial screening rates (%)	
		Rates	95% CIs
20 - 24	148,135	66.5	66.3 - 66.7
25 - 29	190,401	79.0	78.8 - 79.1
30 - 34	188,270	79.4	79.3 - 79.6
35 - 39	183,124	75.9	75.7 - 76.1
40 - 44	153,787	73.5	73.3 - 73.7
45 - 49	128,696	73.8	73.6 - 74.0
50 - 54	96,590	70.6	70.4 - 70.9
55 - 59	64,934	70.4	70.1 - 70.7
60 - 64	48,497	57.5	57.1 - 57.8
65 - 69	36,190	46.5	46.1 - 46.8
20 - 49	992,413	74.9	74.8 - 74.9
50 - 69	246,211	62.9	62.8 - 63.1
20 - 69	1,238,624	72.1	72.1 - 72.2

FIGURE 9:
Triennial cervical screening rates by 5-year age group in NSW

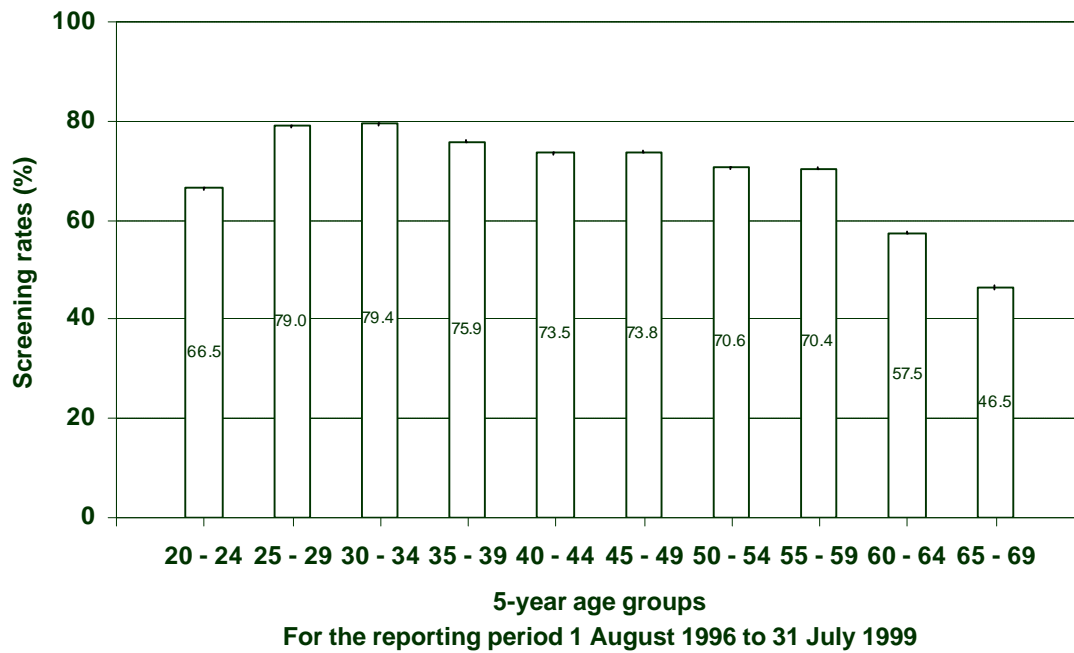


Figure 9 indicates that triennial screening rates were highest among the 25 - 59 year age groups (>70.0%), lower in the 20 - 24 year age groups (66.5%), and lowest in the 60 - 64 year (57.5%) and 65 - 69 year age group (46.5%).

3.2.2 Triennial cervical screening rates by AHS and age group in NSW

In the 20-69 year age group, Mid North Coast (78.5%), Central Coast (76.5%), Northern Sydney (76.5%), New England (76.2%), Mid Western (74.8%), South Eastern Sydney (74.6%), Hunter (73.4%) and Northern Rivers (73.4%) Area Health Services had significantly higher triennial screening rates than the NSW rate (72.1%). (Table 3.10 and Figure 10). Illawarra (70.2%), Macquarie (69.5%), South Western Sydney (67.3%), Wentworth (66.9%), Greater Murray (66.1%), Central Sydney (66.0%), Western Sydney (65.8%), Southern (65.5%) and Far West (54.9%) Area Health Services had significantly lower triennial screening rates than the NSW rate. (Table 3.10 and Figure 10)

In the 20-49 year age group, Central Coast AHS (79.9%) had the highest screening rate in the metropolitan AHSs, compared to lowest in the Western Sydney AHS (67.5%). In the rural AHSs, Mid North Coast AHS (79.4%) had the highest screening rate, compared to 55.4% in the Far West AHS.

In the 50-69 year age group in metropolitan AHSs, Northern Sydney and Central Coast AHSs (66.4%) had the highest triennial screening rates, compared to Central Sydney AHS (52.6%). In rural AHSs, the Mid North Coast AHS (76.0%) had a significantly and substantially higher triennial screening rate compared to all other rural AHSs.

Table 3.10: Number and proportion of women screened and 3-year screening rates by NSW Area Health Service and age group for the reporting period 1 August 1996 - 31 July 1999

Area Health Service	20-49 years		50-69 years		20-69 years	
	no screened	% screened	no screened	% screened	no screened	% screened
Metropolitan AHS						
Central Coast	41,626	79.9 (79.7 - 80.2)	11,636	66.4 (65.9 - 66.9)	5,3262	76.5 (76.3 - 76.7)
Central Sydney	83,099	69.9 (69.7 - 70.1)	17,771	52.6 (52.2 - 52.9)	10,0870	66.0 (65.9 - 66.2)
Hunter	79,151	75.8 (75.6 - 76.0)	19,161	65.0 (64.6 - 65.4)	9,8312	73.4 (73.3 - 73.6)
Illawarra	49,736	74.6 (74.4 - 74.9)	13,454	57.5 (57.0 - 57.9)	6,3190	70.2 (70.0 - 70.4)
Northern Sydney	135,774	79.8 (79.7 - 80.0)	37,544	66.4 (66.2 - 66.7)	17,3318	76.5 (76.4 - 76.6)
South Eastern Sydney	134,248	76.9 (76.7 - 77.0)	31,853	66.3 (66.0 - 66.7)	16,6101	74.6 (74.5 - 74.7)
South Western Sydney	113,522	70.1 (70.0 - 70.3)	23,028	56.1 (55.8 - 56.4)	13,6550	67.3 (67.1 - 67.4)
Wentworth	46,190	68.2 (68.0 - 68.5)	9,105	60.7 (60.2 - 61.3)	5,5295	66.9 (66.6 - 67.1)
Western Sydney	96,675	67.5 (67.3 - 67.6)	22,247	59.6 (59.2 - 60.0)	11,8922	65.8 (65.7 - 66.0)
Metropolitan subtotal	780,021	73.6 (73.6 - 73.7)	185,799	61.5 (61.4 - 61.6)	965,820	70.9 (70.9 - 71.0)
Rural AHS						
Far West	5,170	55.4 (54.7 - 56.1)	1,464	53.4 (52.1 - 54.8)	6,634	54.9 (54.3 - 55.6)
Greater Murray	34,672	70.3 (70.0 - 70.6)	8,965	53.8 (53.2 - 54.3)	43,637	66.1 (65.9 - 66.4)
Macquarie	14,251	72.4 (72.0 - 72.9)	3,869	60.4 (59.5 - 61.3)	18,120	69.5 (69.1 - 69.9)
Mid North Coast	33,764	79.4 (79.1 - 79.6)	11,454	76.0 (75.5 - 76.5)	45,218	78.5 (78.3 - 78.7)
Mid Western	23,851	77.1 (76.8 - 77.5)	6,358	67.4 (66.7 - 68.0)	30,209	74.8 (74.5 - 75.1)
New England	26,563	78.8 (78.5 - 79.1)	7,882	68.4 (67.8 - 69.0)	34,445	76.2 (75.9 - 76.4)
Northern Rivers	35,824	76.4 (76.2 - 76.7)	10,428	64.3 (63.8 - 64.8)	46,252	73.3 (73.1 - 73.6)
Southern	22,243	66.2 (65.8 - 66.6)	7,038	63.3 (62.7 - 64.0)	29,281	65.5 (65.2 - 65.8)
Rural subtotal	196,338	73.8 (73.7 - 73.9)	57,458	64.4 (64.2 - 64.6)	253,796	71.5 (71.4 - 71.6)
AHS Not Available	16,054		2,954		19,008	
NSW total	992,413	74.9 (74.8 - 74.9)	246,211	62.9 (62.8 - 63.0)	1,238,624	72.1 (72.1 - 72.2)

FIGURE 10:
Triennial cervical screening rates in 20-69 year age group
women in NSW Area Health Services

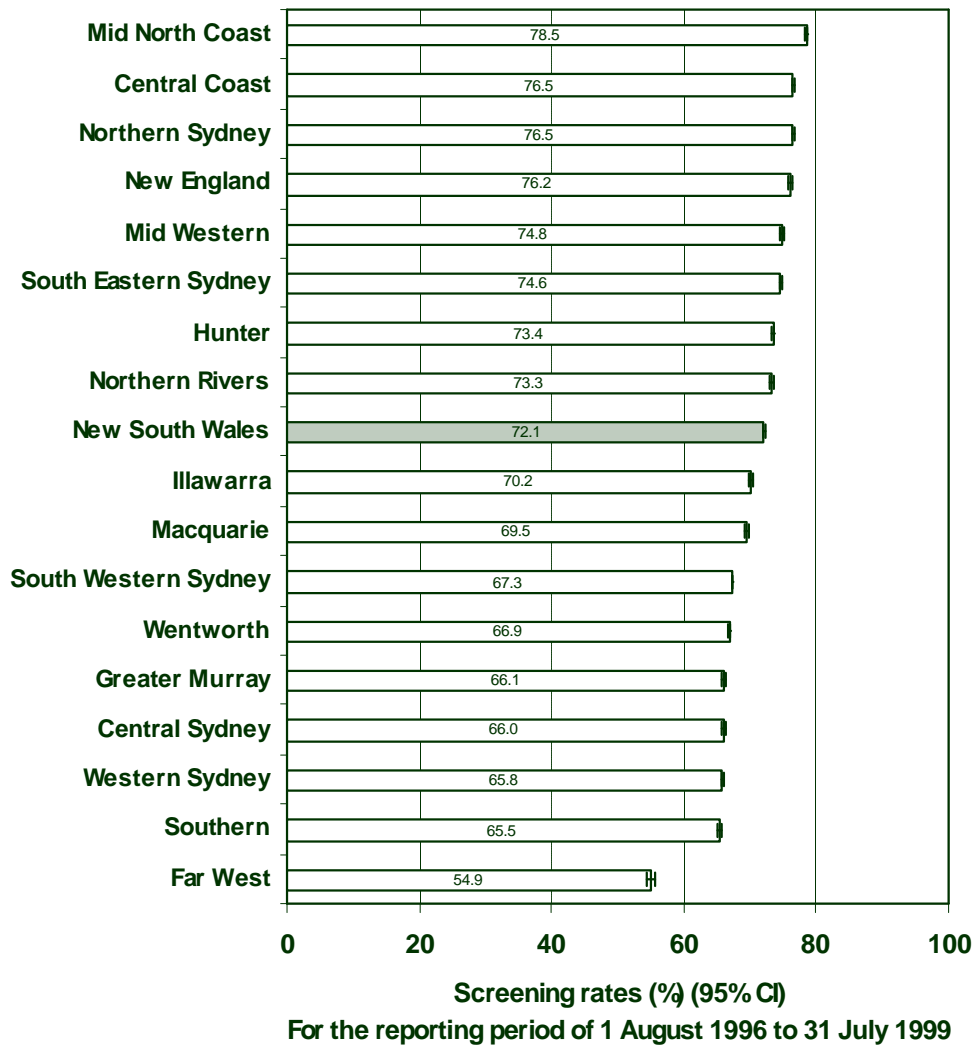


Figure 10 summarises triennial screening rates for the 36-month reporting period (1 August 1996 - 31 July 1999) by NSW Area Health Services, with 95% confidence intervals. Mid North Coast, Central Coast, Northern Sydney, New England, Mid Western, South Eastern Sydney, Hunter and Northern Rivers Area Health Services had screening rates significantly higher than NSW (72.1%). Illawarra, Macquarie, South Western Sydney, Wentworth, Greater Murray, Central Sydney, Western Sydney, Southern and Far West Area Services had significantly lower screening rates than NSW.